

The Winnipeg Metropolitan Region: Plan20-50

MABE Outlook Conference

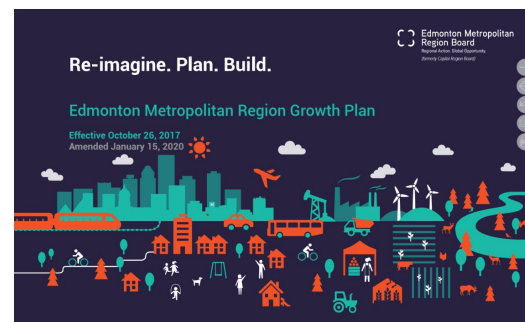
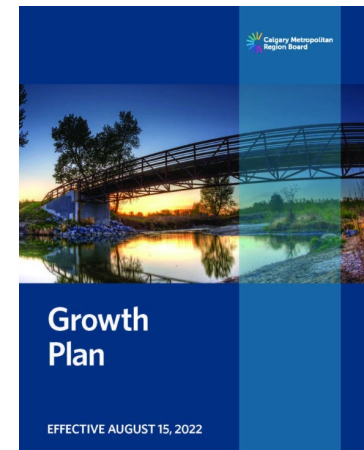
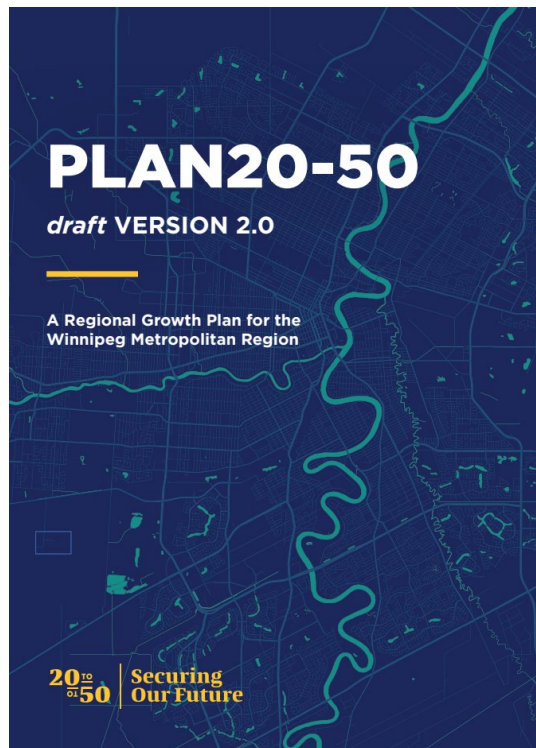


Colleen Sklar

Executive Director @
Winnipeg Metro Region

Plan20-50: Bringing WMR up to speed with other regions

20^{to}
of 50

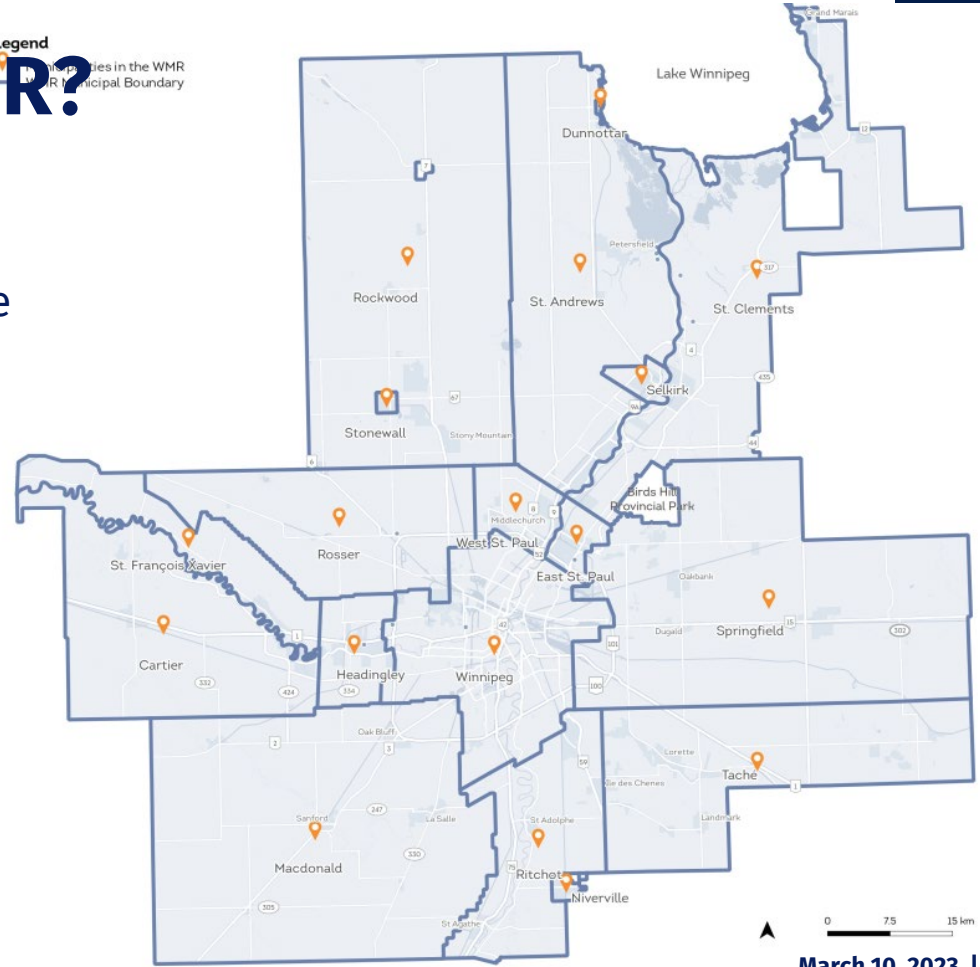


Where is the WMR?

Legend

 Municipalities in the WMR
 WMR Municipal Boundary

- The Winnipeg Metropolitan Region with its 18 municipalities is the economic engine of the province.
- 65% of Manitoba's population & 66% of Manitoba's GDP



The WMR has a long history



- Formed in 1998 by the Mayors and Reeves of the Capitol Region with support from the Province of Manitoba.
- Provided direction to set priorities in the areas of planning, growing and servicing the region.

Today's goals are the same as in 1998

Create a strong, sustainable and prosperous region with a quality of life that is second to none.

Plan20-50 allows us to reach these goals

Getting started on Plan20-50



Jeremy Heigh

“Competing as a region will yield more than one win in any individual municipality”



Gregg Wassmansdorf

“The Winnipeg Metro Region must organize as a formal, cohesive region.”

2015 – Engaged experts to review the current state of the region

How competitive regions plan...



Expert economists provided advice to align ourselves with what other successful regions have done across Canada and the globe.

Simply put, they said the way we were planning and organizing ourselves – one community/municipality at a time, left us uncompetitive

How we are currently organized

Can be characterized by Duplication and Fragmentation

Plans & Strategies

- 9 development plans
- 106 economic development plans
- 14 climate plans
- 4 watershed management plans

- No integrated servicing strategy
- No water and wastewater strategies
- No agricultural master plans

Emergency Services

- 26 firehalls outside Winnipeg, 30 in Winnipeg

Solid Waste

- 25 waste disposal grounds & waste transfer stations

Land Use

- 92 unique land designation names across region

Community Facilities

- 295 publicly-funded recreational facilities

2019 Dr. Robert Murray's report – For the Benefit of All

To help the region become more resilient, sustainable and globally competitive Dr. Robert Murray recommended:

1. Regional Collaboration
2. Regional Approaches to planning
3. **A Long-Term Regional Plan**



This report echoed what we heard in 2015 and was the blueprint to get to where we are today.

2019 Mandate for the Winnipeg Metro Region

The Province of Manitoba mandated the WMR to:

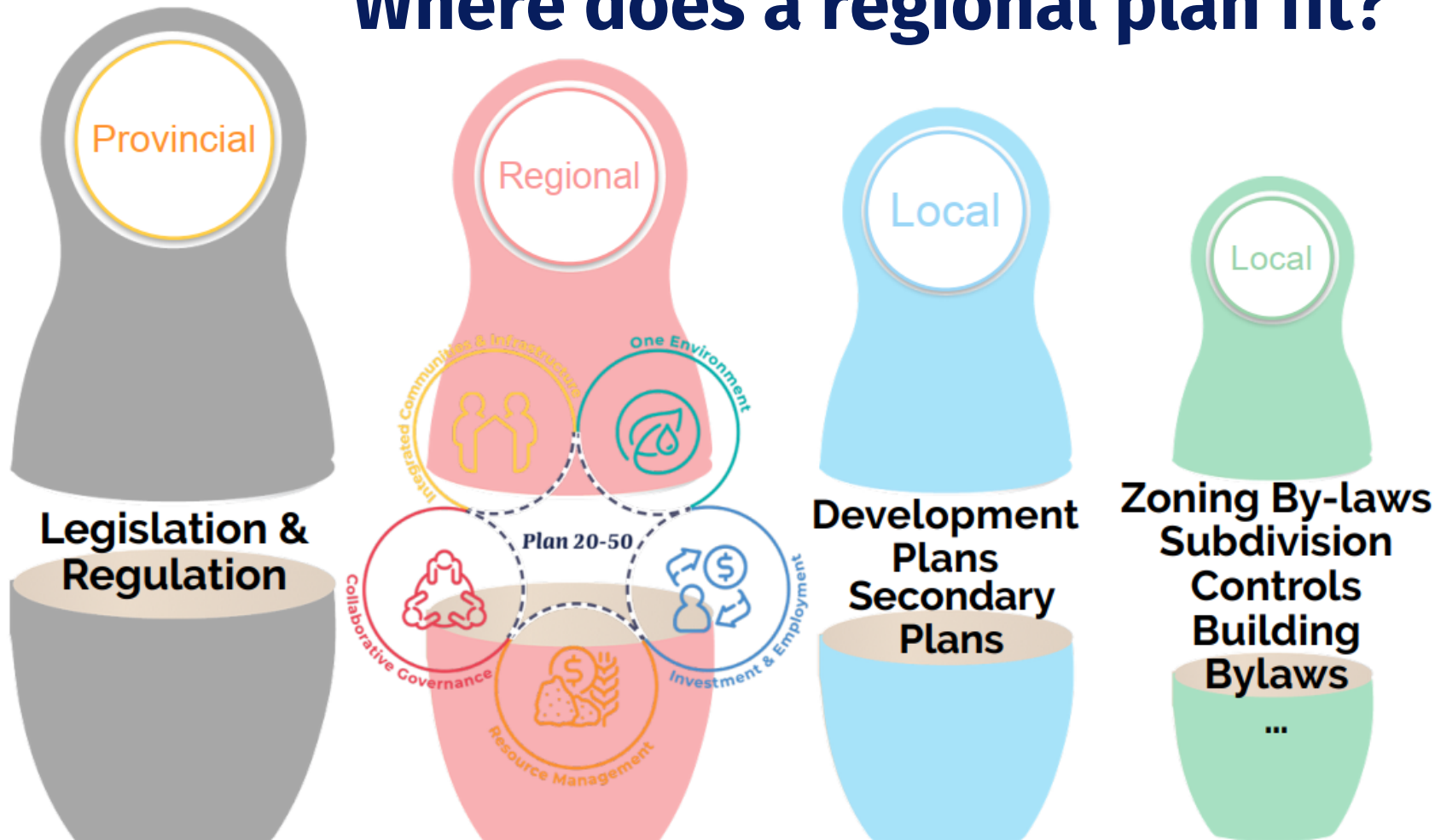
“Coordinate economic development, reduce red tape and duplication, and develop a strategy to coordinate land use and servicing in the Metro Region.”

- **Develop a regional land use and servicing plan**
- **Work with the Province to set the direction for the capital planning region**

Why plan regionally?

- Regional planning is **adopted world-wide** and in every other major Canadian regions.
- A move from 5-year planning to **30-year planning**.
- Coordinates servicing and provides a framework for strategic investment in regional infrastructure and services – **move from duplication and fragmentation to coordination**.
- Allows us to plan and designate enough **land for homes and commercial activity**.
- Provides **consistency for local planning** across the region.

Where does a regional plan fit?



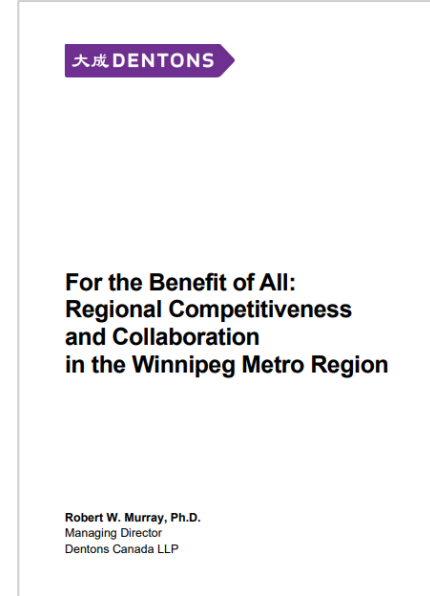
Getting to Plan20-50 - A solid foundation



2014



2016



2019

A Strong Foundation – WMR Background Plans, Reports and Studies

- **A Blueprint for Collaboration - Building Something Big (2014);**
- Capital Region Transportation Master Plan (2014);
- **Regional Growth Strategy – Securing our Future (2016);**
- Transportation Driving Growth (2016);
- Emergency Services Review (2016);
- Multi-Modal Feasibility Study (2016);
- Regional Tourism Planning (2018);
- Regional Economic Development (2018);
- A guide to Recreation Planning in the *Winnipeg Metropolitan Region* (2018);
- Waste Rationalization Feasibility Study (2018);
- West Winnipeg Park and Ride Transit Hub Feasibility Study and Plan: Development of a Regional *Park and Ride Facility* West Winnipeg (2019);
- Fibre Optics: Connecting to Opportunity (2019);
- Report on Regional Recreation for the Winnipeg Metropolitan Region (2020);
- Capital Region Growth Strategy: Long-Range Residential and Employment Land Forecasts (2020);
- Winnipeg Metropolitan Region Water and Wastewater Treatment Systems Capacities Study (2021);
- Integrating the Principles of Circular Economy: Policy Recommendations for the Winnipeg Metropolitan Region (2021).
- Inventory of Winnipeg Metropolitan Region Asset Base Supporting Foreign Direct Investment Attraction - Working with Site Selectors (2021)
- Evaluation of the Foreign Direct Investment Readiness of Manitoba's Capital Region (2022)
- Regional Goods Movement Study and Freight Model (in process)
- First Nations Contribution to Land Development (in process)
- Plan20-50 Primer: Foreign Direct Investment (in process)

Plan20-50 Expert Team

**We researched
best practice and
engaged an expert
and diverse
planning team**

Winnipeg Metropolitan Region

- Colleen Sklar, Executive Director
- Jennifer Freeman, Program Manager
- Ryan Litovitch, MCP
- Natalie Lagassé, MCP
- Anuj Kathuria, MCP
- Jonas Cortez, Digital Media Specialist

Prime Strategy & Planning

- Lisa Prime, MES, MCIP, RPP

WSP

- Meagan Boles, MCIP, RPP

urbanMetrics inc.

- Peter Thoma, MCIP, RPP, PLE

Metro Economics

- Tom McCormack

PlaceMakers

- Hazel Borys

Stantec

- Cameron Dyck, P. Eng
- Nick Szoke, P. Eng

HTFC

- Adam Kroeker, MCP

Indigenous Engagement

- Laren Bill, MNRM

Metabolic

- Gerard Roemer, MSC
- Chandar Van Der Zande, MSC
- Andrew McCue, BA

Strategic Systems Engineering

- Hank Venema, Ph.D, P.Eng

GDAN Solutions

- Greg Dandewich, MCP

MORR Transportation Consulting Ltd.

- Jeannette Montufar, Ph.D., P.Eng., PTOE, RSP, FITE, FCAE, FEC

Blueprint Inc.

- Michelle Kuly
- Etoile Stewart

Honest Agency

- Sherril Matthes

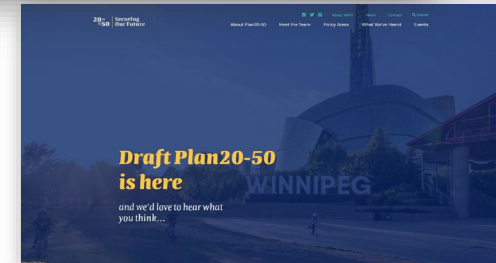
Clear direction from WMR Board



Community Consultation – Getting to Plan20-50 1.0

 **500** Experts +  **1000's** of Stakeholders +  **1000's** Discussion Hours

- 11 in-person facilitated sessions in February 2020
- 72 Zoom facilitated sessions
- one-on-one meetings with 100s of people
- Municipal CAO Working group established



Plan20-50 version 1.0 – A place to start



- April of 2021 - Draft Plan20-50 released publicly for feedback
- June of 2021 - Draft Plan20-50 submitted to the Minister of Municipal Relations with a copy of the **675-page Review Report** summarizing all comment and feedback collected

Getting to Plan20-50 2.0

**Started the day 1.0 was released and
consultation continued**

Digging into Plan 20-50 Council Workshops

- November 19, 2021
- December 17, 2021
- March 18, 2022
- May 2, 2022
- December 9, 2022
- January 20, 2023



**Attended by municipal representatives including
WMR Board members, Councilors, CAOs and planners.**

**2nd draft of Plan20-50 2.0 released for comment
and review on November 7, 2022**

***The Winnipeg Metropolitan
Region is happy to present the
latest draft of Plan20-50.***

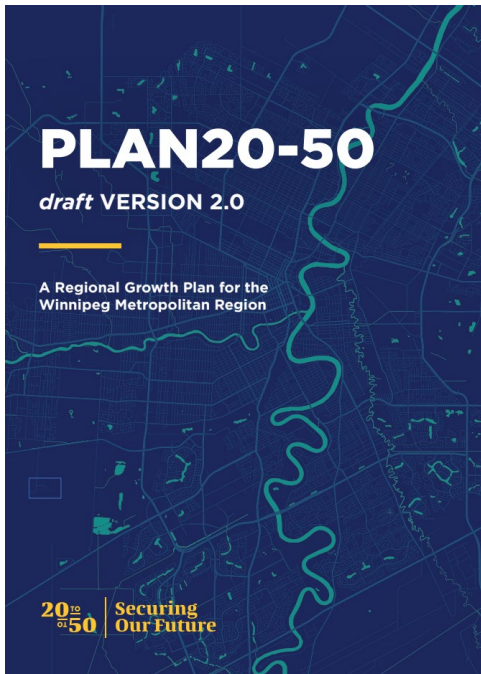
DOWNLOAD THE PLAN

FEEDBACK & COMMENTS

WINNIPEG

The goals & policy direction largely remain the same

- From the second set of workshops, consultation and expert input Plan20-50 2.0 was created.
- Although some policy and language changed from the first draft, **the goals in the second draft of the plan largely remained the same as when we first started the process.**



Goals are expressed by 5 policy areas



5 policy areas

1. Integrated Communities & Infrastructure
2. Investment & Employment
3. One Environment
4. Resource Management
5. Collaborative Governance

Integrated Communities and Infrastructure

Objectives

- Aligning growth with infrastructure and services to support growing communities;
- Protecting agriculture lands, resource areas, and natural lands and water; and
- Providing housing choices for all – recognizing our aging population and future needs of our workforce.



Align growth with infrastructure to ensure communities have what they need

Investment and Employment

Objectives

- Promoting expanded economic opportunities to support a diversified economy with real-time data;
- Investing strategically in infrastructure and services to ensure an adequate supply of serviced land for businesses to grow and relocate here; and
- Supporting a high quality of life to attract the diverse workforce we need.



Ensure business and industry have what they need to provide good jobs for our future

One Environment

Objectives

- Ensuring long-term access to quality water supply;
- Managing our water resources by protecting the ecological health of watersheds;
- Supporting a natural assets network in the region to support climate resiliency; and
- Planning to transition to a low-carbon future.



Protect agricultural lands and water

Resource Management

Objectives

- Reaffirming through our actions that agriculture is a major economic driver; and
- Planning to ensure our mineral aggregate resources are protected.



Sustainably manage our resources today, with an eye on tomorrow

Collaborative Governance

Objectives

- Improving coordination of land-use planning, infrastructure investment, and service in the region;
- Supporting regional coordination and improve access for all to real-time, consistent and accurate data;
- Encouraging and promoting asset management planning to support regional priorities; and
- Collaborating with our partners in business, industry, NGOs and all levels of government including Indigenous Nations.

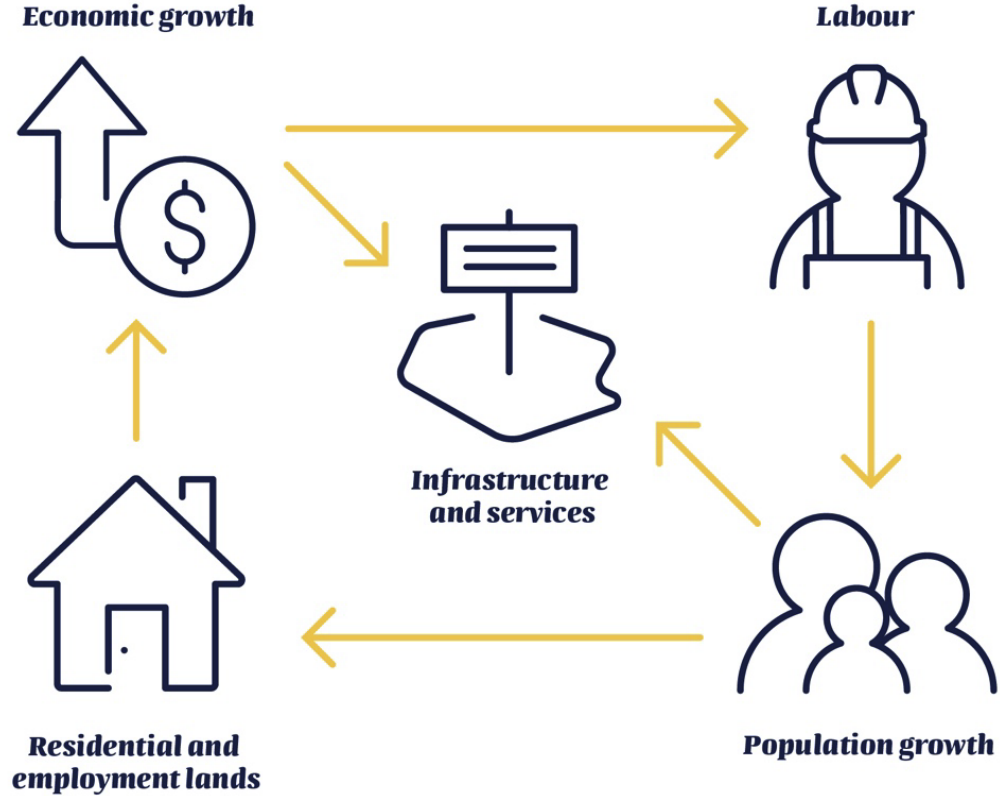


Ensure better collaboration across jurisdictions and make reconciliation a priority

High level goals we consistently heard since 1998

- **Good jobs for our future** - so our kids don't have to move away and so we can attract newcomers
- **Transportation** in and around the region - moving people and goods.
- **Protection of agricultural land, resources and water** to maintain food security and agricultural strategic advantage.
- **Housing for all** to serve a growing, aging and changing population.
- **Safe and sustainable infrastructure and services** for today and tomorrow.

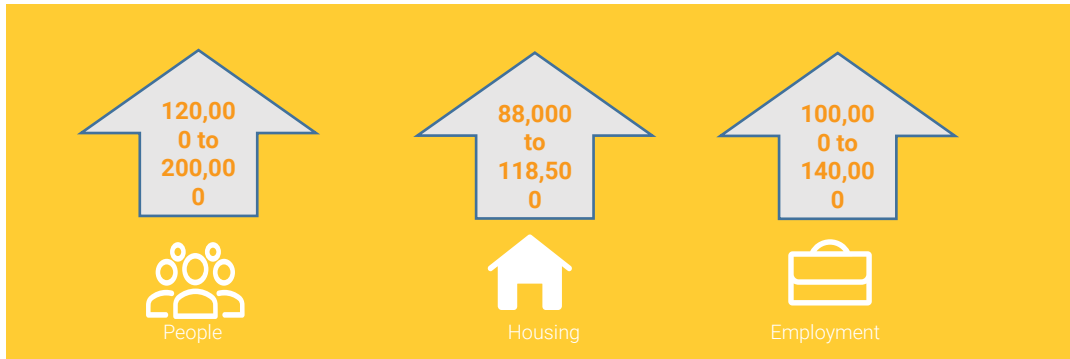
Growth



First age cohort forecast for the WMR Population, Employment and Housing Forecast

- By 2050

- An increase of:
200,000 people
- 118,500
households
- 140,000 jobs



In 2050

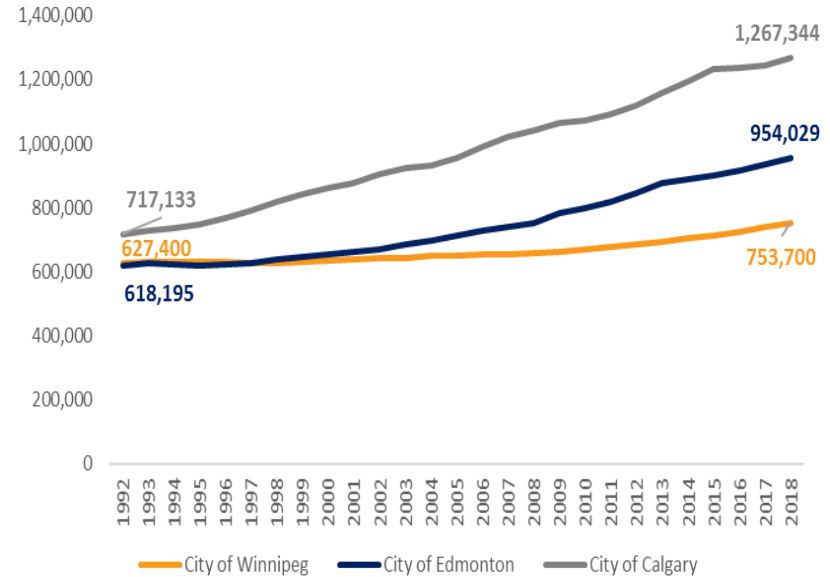
**1.1
Million**
Residents

460,000
Households

510,000
Jobs

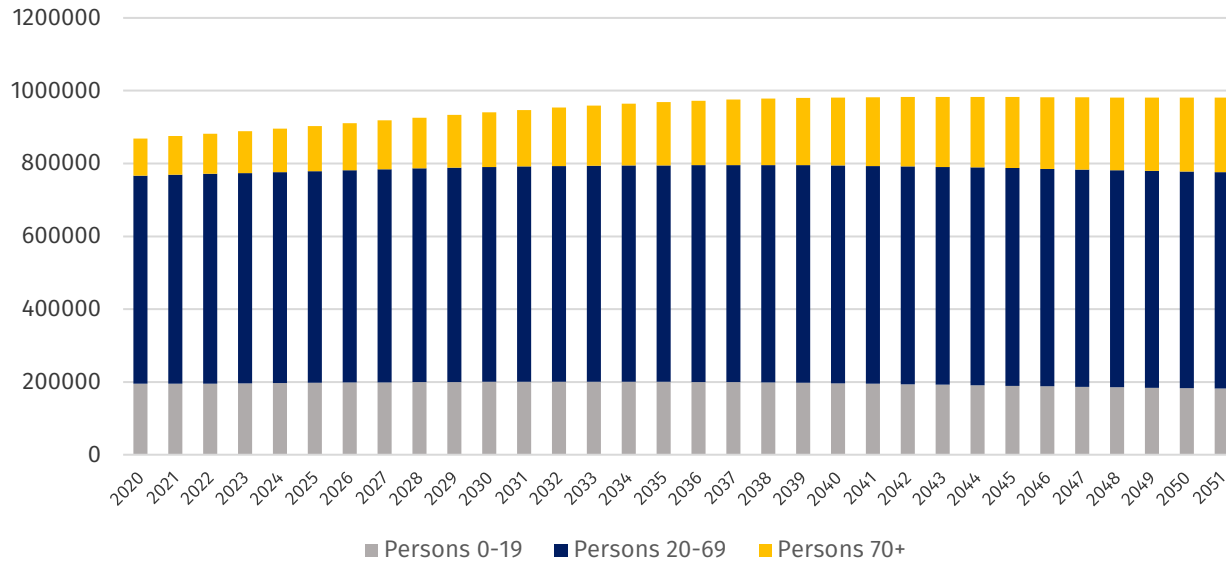
Population growth comparison to Western cities

- In the early 1990s, Winnipeg, Calgary and Edmonton were all relatively close in size.
- While the Alberta cities grew, Winnipeg has seen more moderate growth (~135,000).
- Edmonton and Calgary have established regions.



Planning for an Aging Population

Winnipeg Metropolitan Region Population Forecast by Major Age Group—
Baseline Scenario (2020-2051)



Walkable Mixed-Use Complete Community Place Types

Downtown



Neighbourhood

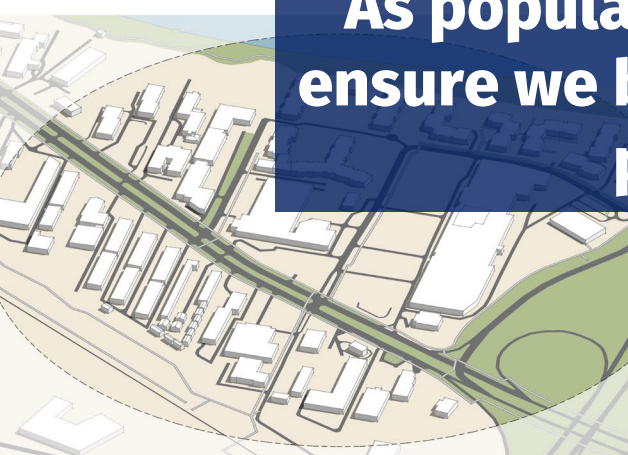


Town



As population grows and ages, we need to ensure we build the kind of communities that people want to move to

Strip Commercial



Job Centre



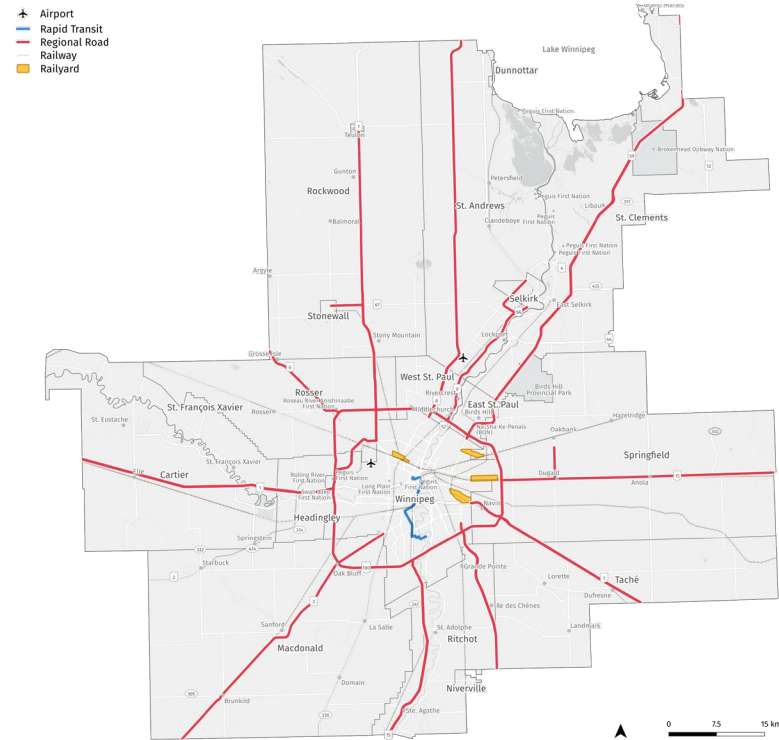
Rural Residential



Drivable Single-Use Place Types

Transportation to get people to jobs and goods to market

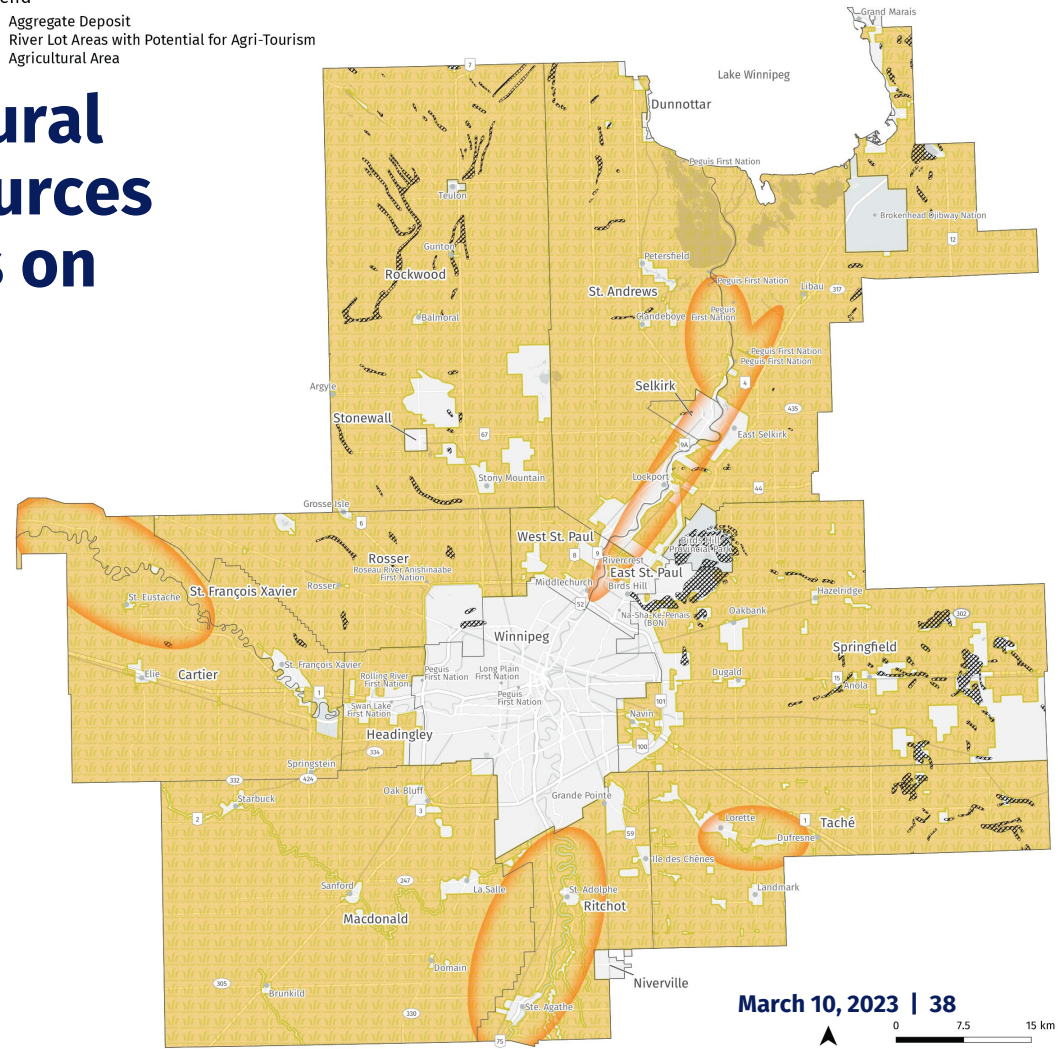
- Important to key sectors:
 - Trucking & Logistics
 - Manufacturing
 - Agriculture
- Important to work force:
 - Access to jobs and housing.



Protection of Agricultural Land, Water and Resources our economy depends on

- Significant agricultural and natural assets are located in our region.

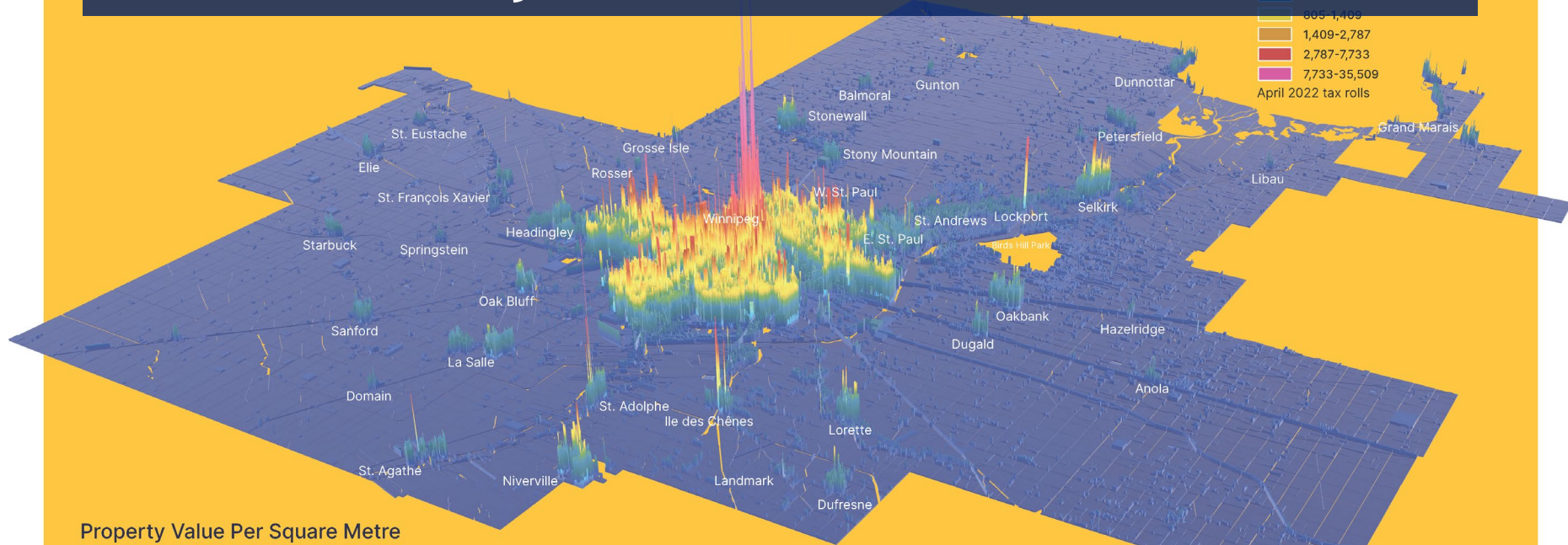
Legend
Aggregate Deposit
River Lot Areas with Potential for Agri-Tourism
Agricultural Area



Infrastructure to support the economy and communities

- Water capacity needed for business, industry, and growing communities.
- Parks, recreation facilities, daycare, schools, etc. to maintain and improve quality of life.

Plan and invest in our region to ensure communities and the economy has what it needs



Property Value Per Square Metre

Economic developers usually prioritize ways to attract new businesses based on the total jobs or revenue that each new development is expected to produce in the region. **Jobs per m²** and **property tax per m²**

tell a more complete story, since infrastructure and service costs are not included in the property value per square metre. This map shows the property value per square metre for different types of land use. The more complete the community, the more it pays back.

Think Like a Farmer

In the last 60 years, the built area of Winnipeg alone has almost doubled while the population is responsible for about 40% more land area than in the 1970s. Each person pays for about 70% more water and sewer pipe than they did 60 years ago. (City of Winnipeg, 2019)

Plan20-50 helps regional decision makers think like a farmer. How many tax dollars will each new development pay for the roads, water, sewer, power, and services both locally and within the region that residents need for economic, environmental, and social resilience?

March 10, 2023

How does Plan20-50 get us there?

How does Plan20-50 get us there?

The plan focuses on 6 tools/strategies for creating a strong, prosperous and sustainable region for all, with a quality of life that second to none

Tools to Get You There

Member Munis (p.30)

1. Compact Development

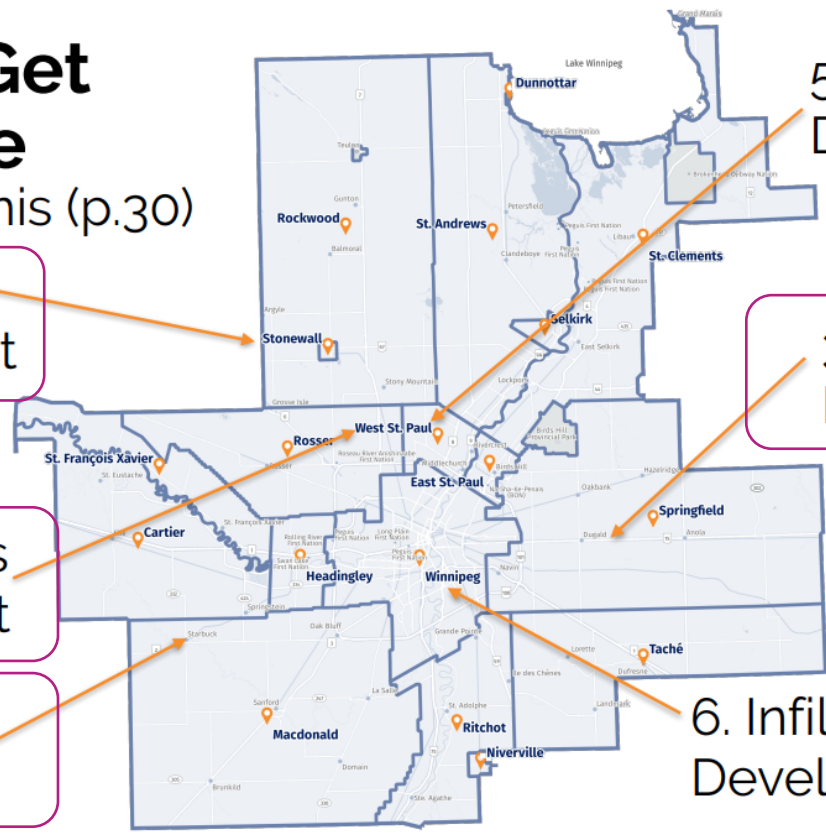
2. Contiguous Development

4. Density

3. Housing Diversity

5. Greenfield Development

6. Infill Development



Reaching Our Goals

What does that look like?

Safe and sustainable infrastructure & services
 Housing for all
 Protection of ag land, resources & water
 Transportation in & around the region
 Good jobs for our future

1. Compact Development	✓	✓	✓	✗	✓
2. Contiguous Development	✓	✓	✓	✗	✓
3. Housing Diversity	✓	✓	✓	✗	✓
4. Density	✓	✓	✓	✗	✓
5. Greenfield Development	✓	✓	✗	✗	✓
6. Infill Development	✓	✓	✓	✗	✓

Compact & Contiguous Development

- Helps create the places people want to live.
- Efficient use of land and infrastructure.
- Using our resources in the best way possible.
- Supports transit/transportation.



Housing Diversity

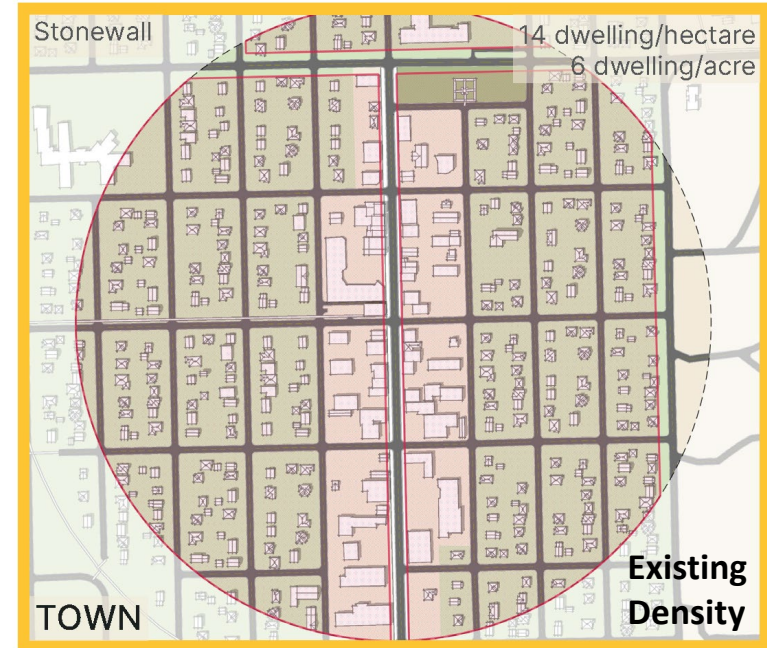
- Plan encourages a range of housing types.
- Homes for every age and stage of life.
- Supports workforce location.



Dugald

Density

- Plan establishes a minimum unit density for existing urbanized locations in the region.
- Measured at a project scale (ex. new subdivision)
- Also ensures efficient land use and infrastructure utilization.



An aerial photograph of a multi-lane highway intersection in a rural landscape, featuring large agricultural fields. The image is overlaid with a semi-transparent blue filter. The text 'Next Steps' is prominently displayed in a bold, yellow font on the left side of the image.

Next Steps

January 1, 2023 - Legislation in place

*“The new regulation builds on the positive legacy of the Winnipeg Metropolitan Region. The province will work with the WMR to transition to the new planning region framework that is **supported by legislation to deliver, for the first time, a regional plan** set in by-laws that are developed and informed through public engagement.”*

Province of Manitoba
December 2022

Next steps for Plan20-50

- Formal regional plan adoption process.
- WMR to work with municipalities to support local plan alignment with regional plan.
- Continue developing guides, tools and building capacity.

Thank You!

20to50.ca

Contact

T: 204.989.2048

E: info@wmregion.ca